

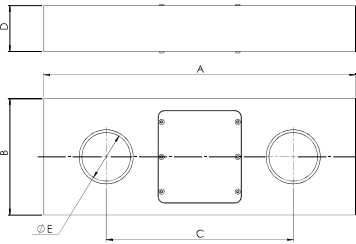
Telemetry Tensile Link TL-2.0

The TL-2.0 is a second generation Telemetry Tensile Link Load Cell. A light weight wireless tension measuring unit it combines a high level of performance with a robust design for harsh environments.

With a range up to 200m and a huge battery life of 700 hours the TL-2.0 can be paired with one or a multiple number of TW-2.0-T Telemetry Hand Held Displays



Dimensional Data



Features:

- Light weight aerospace grade Aluminium
- Ability to transmit to multiple hand held displays
- 2.4GHz license free frequency
- High accuracy
- Rebranding option
- 200m signal range
- Remote power on/off feature
- Sleep mode for battery conservation



Load Capacity Tonnes	Part Number	Shackles	A	B	C	D	ØE	Accuracy % FRO	Proof test % Load Capacity (Kg)	Weight Default (Kg)	t Resolution
2	0001 – 1001	Crosby G2130	214	81	174	16	16.5	0.2	150	1.0	1
5	0001 – 1002	Crosby G2130	260	109	180	25	28	0.2	150	2.0	1
12	0001 – 1003	Crosby G2130	260	109	165	40	38	0.2	150	2.6	5
17	0001 – 1004	Crosby G2130	320	127	204	45	44	0.2	150	4.0	5
25	0001 – 1005	Crosby G2130	340	127	204	50	53	0.2	150	5.0	10
35	0001 – 1006	Crosby G2130	370	149	210	50	60	0.2	150	6.5	10
50	0001 – 1007	Crosby G2130	395	160	220	73	73	0.2	150	11	50
80	0001 – 1008	GN H9	465	180	250	98	86	0.2	150	18	100
100	0001 – 1009	GN H10	535	220	275	100	99	0.3	150	26.5	100
120	0001 – 1010	GN H10	535	240	275	100	99	0.3	150	29.5	100
150	0001 – 1011	GN H10	587	260	295	125	112	0.3	150	43.5	100
200	0001 – 1013	GN H10	658	320	320	125	128	0.5	150	62.0	100
200	0001 – 1012	Crosby G2140	658	320	320	125	125	0.5	150	62.0	100
300	0001 – 1015	GN H10	790	370	380	147	154	0.5	150	100.5	100
300	0001 – 1014	Crosby G2140	790	370	380	147	156	0.5	150	100.5	100
400	0001 – 1139	GN H10	950	500	500	175	180	1.0	150	200.0	100
400	0001 – 1016	Crosby G2140	950	500	500	175	183	1.0	150	200.0	100
500	0001 – 1141	GN H10	950	500	500	200	190	1.0	150	220.5	100
500	0001 – 1140	Crosby G2140	950	500	500	200	196	1.0	150	220.5	100

Specification

Link Material:	Aluminium
Design:	Holes designed to fit fed spec shackles / Pairing switch / Signal LED / Charging socket
Bridge Resistance:	700Ω
Battery:	2 x 1.25V NiCad or NiMH rechargeable
Battery Life:	700 hours continuous (2 years non operational)
Charger:	Supplied with universal smart charger
Operating Temperature:	-20°C to +60°C
Handheld Display:	One or more TW-2.0-T displays
Frequency:	2.4GHz
Range:	Up to 200m line of sight
Calibration:	Calibration and proof load certificates to BS EN 10002/2 1992
Protection:	IP65
Packaging:	Rugged and watertight case for links up to 50T / Custom made wooden case for larger capacities
Approvals:	FCC tested and compliant